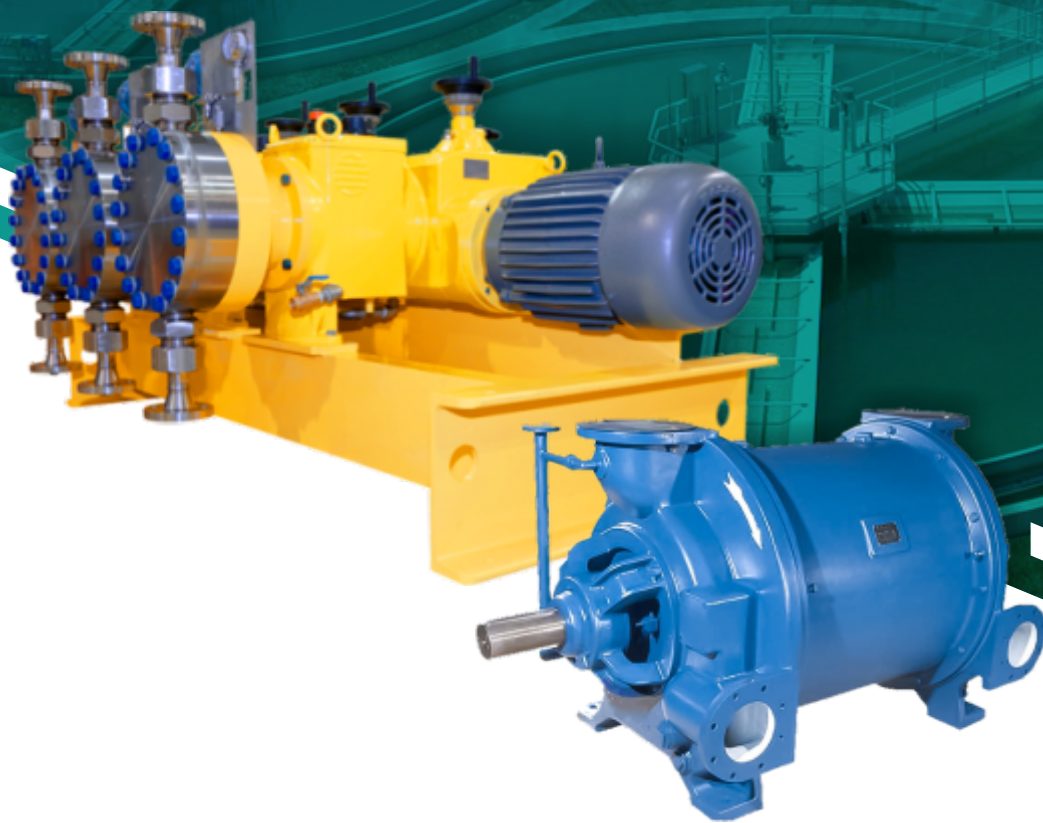


# Industrial Pumps & Dosing System



 **AMERIGO**  
EXPORTS PVT. LTD.  
EFFICIENCY COMMITMENT

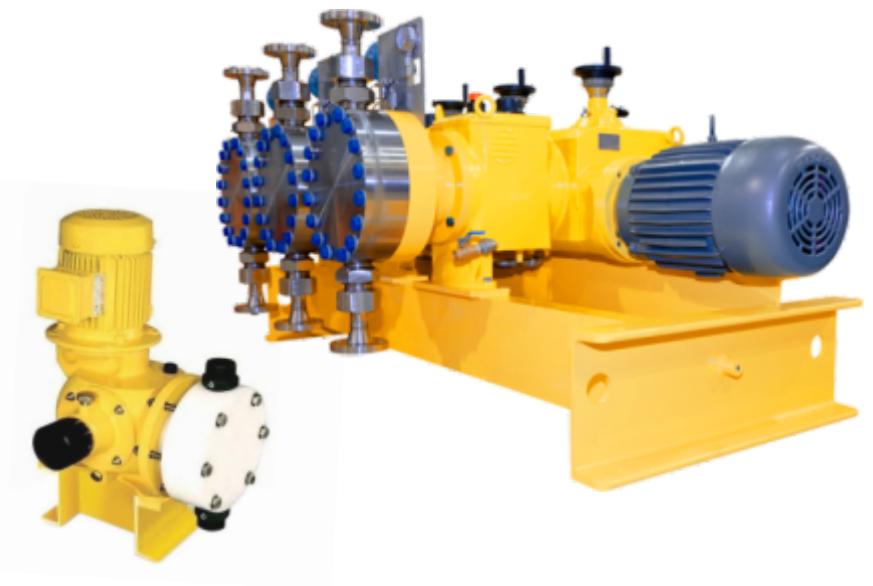
## DIAPHRAGM DOSING PUMP

### Core Technologies

- Electric Motor operated
- Plug & Play
- Resistant to toxic liquid
- Tailor-made as per application
- Multiplexing is possible for higher flow

### We Offer Complete Range Of Hydraulic (diaphragm) Metering Pumps

Available in SS316, SS316L, CI, Alloy 20, Hastelloy, PP & other materials. Flow upto 7000 LPH in single head & Discharge Pressure up to 300 Kg/cm<sup>2</sup>. Multiplexing can done for higher capacities. Complying as per API 675 standards. Sandwich diaphragm for pressure leak detection & in-built relief valve is provided for better performance.



## PLUNGER METERING PUMP

- Available in SS316, SS316L, PP & other materials
- Flow up to 7000 LPH in single head
- For higher capacity, multiplexing can be done
- Discharge Pressure up to 300 Kg/cm<sup>2</sup>
- As per API 675 standards

## ELECTRONIC DOSING PUMP

- Electronically-Mechanically Acutated Diaphrgm
- M.O.C - PP, PVC, PVDF, SS 316
- Maximum Flow: 12 LPH
- Maximum Pressure: 10 kg/cm<sup>2</sup>
- Low Power Consumption



## DOSING SYSTEM

- LP & HP Dosing System
- Phosphate Dosing System
- Hydrazine Dosing System
- Ammonia Dosing System
- Corrosion inhibitor Dosing System
- Mercaptan Dosing System
- BFW Dosing System
- Sulphuric Acid Dosing System
- Additive Injection System
- DMDS & many more....



## HIGH PRESSURE MULTISTAGE PUMP

### APPLICATIONS

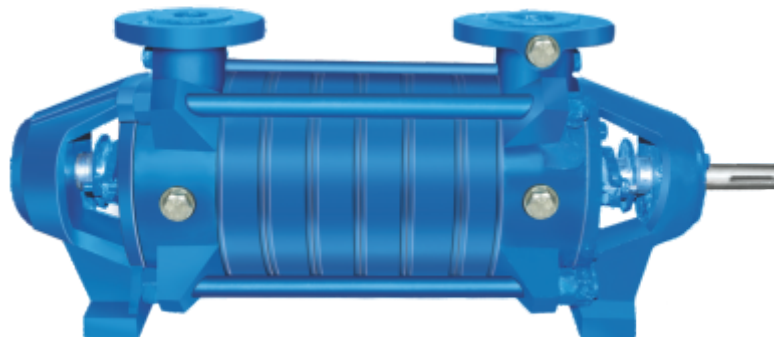
- Mine - Dewatering & Descaling.
- Boiler Feed Water Service.
- High Pressure Application in Pulp & Paper Mills.
- General Water & Fire - Fighting Systems.
- Main & Auxiliary Condensate Extraction.
- Sprinkler Irrigation.
- Filter Press Washing.
- Water Supply to High Raise Buildings.

### OPERATING RANGE

- Capacity : Up to 75 m<sup>3</sup>/hr
- Head : Up to 280 mtr
- Discharge Size : Dn 32 to 65 mm
- Temperature : Up to 140°C
- Speed : Up to 3500 rpm
- Pressure : Up to 28 kg/cm<sup>2</sup>

### MATERIAL OF CONSTRUCTION

- SS-316, SS-316 L • SS-304, SS-304L • Cast bronze
- Cast steel • Cast iron etc.....



## THERMAL VALVE

- High Performance Valves
- High Pressure Valves
- IBR Certified Valves
- Application: Gas/Vapour
- Valves specially designed for steam





## LIQUID TRANSFER PUMP (KSB-CENTRIFUGAL)

### Core Technologies

- Electric Motor operated
- Plug & Play
- Minimal Maintenance cost
- Resistant to toxic liquids
- Comply quality standards
- Strom Cool

### Complete Range Of Centrifugal

#### Pumps For Various Industrial Applications

Horizontal, back pull out, volute casing, single stage, centre line discharge, end-suction centrifugal pump. Excellent super alloy pumps for hazardous, corrosive & toxic media. Flow capacity up to 200 m<sup>3</sup>/hr, Head upto 100 m, Viscosity up to 150 mPas (cP), Working pressure: 16 bar, Temp: 180 Deg C



## VACUUM PUMP

### LIQUID RING VACUUM PUMP

The pump can run with wide range of operating speeds. This enables the user to save energy by running the pumps at lower speeds. It also provides a wide margin for future capacity increase by running the pump at higher operating speeds.

The liquid ring vacuum pump is available in various models and can handle excess liquid carryover without much difficulty. These liquid ring vacuum pumps are used in many applications like Textile, Mining, Paper, Sugar, Tobacco, Food and other Process Industries.

The Vacuum Pumps have been designed for easy dismantling and overhauling to facilitate quick service. The Vacuum Pumps require very little care or maintenance in most applications.

### SPECIFICATIONS

Vacuum range	0-27+ in Hg vac/to 100 mbar abs.
Differential pressure capability	15 psi/ 1 bar
Compressor pressure	15 psig/ 2 bar abs
Standard Construction material	Cast iron, Stainless Steel



**PVDF Process Pump**



**Progressive Cavity Pump**



**Non Clog Sewage Submersible Pump**



**Slurry Pump**



**FRP Storage Tank**



**SS Storage Tank**



**Sludge Dewatering Pump**



**Screw Pump**



**Rotary Pump**



**Worm Gear Box**



**Pneumatic Valve**



**Heavy Duty Drilling Machine**



**Solenoid Valve**



**Pulsation Dampner**



**Chemical Mixing Agitator**

